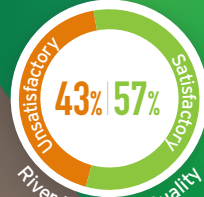


2020 Water Indicators

Rivers

Changes in biological quality of rivers surveyed in 2019 and 2020

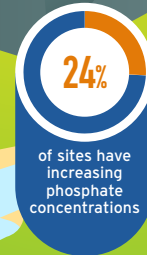


Rivers



Rivers

Nutrient Trends 2013-2020



Nitrogen

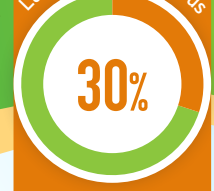
Phosphorus

Lakes

Lake biological quality



Lake Total Phosphorus



Groundwater



Estuarine and Coastal

Riverine inputs of nitrogen and phosphorus increasing since 2012-2014

